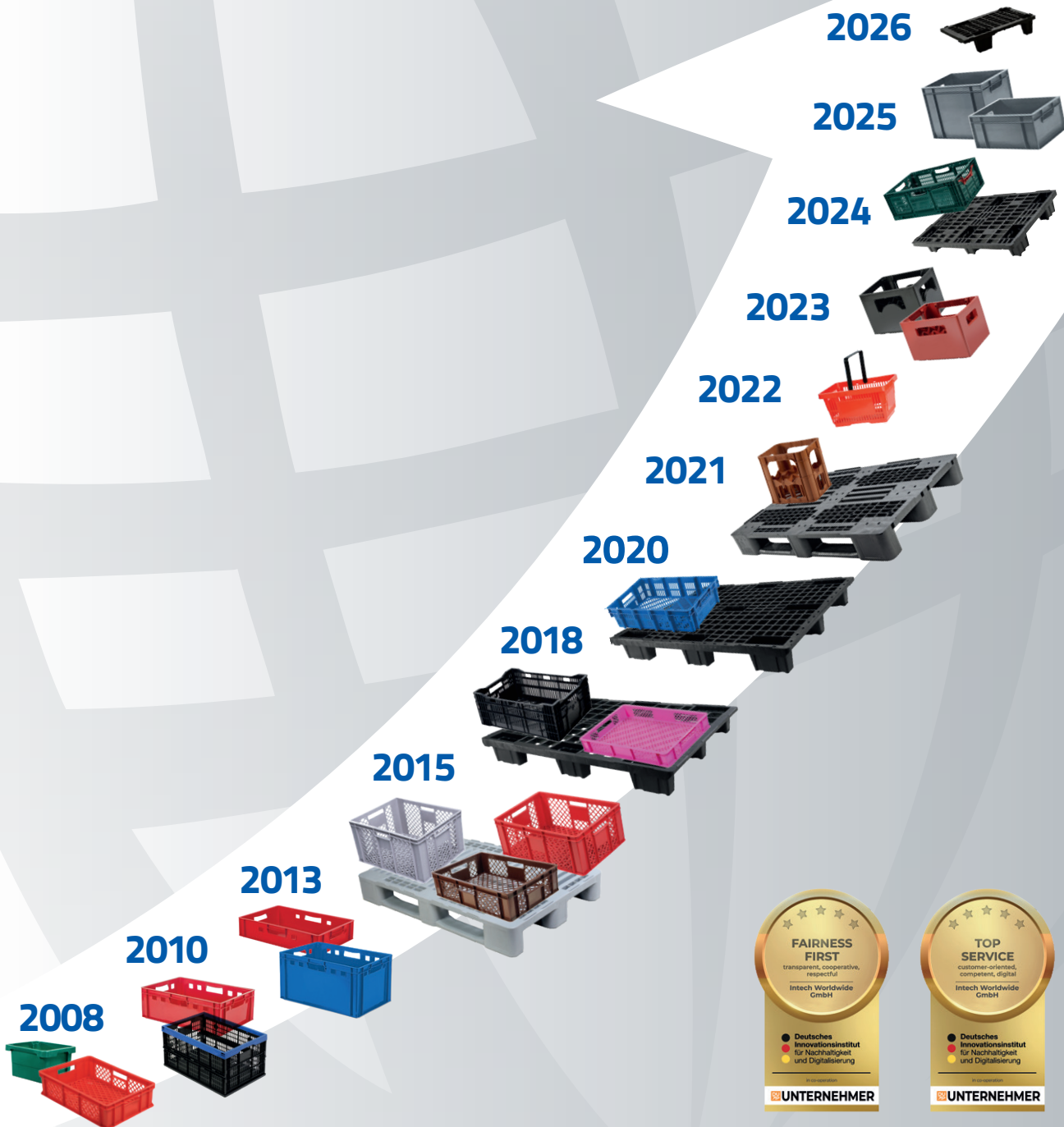




INTECH world wide GmbH

PRODUCT PORTFOLIO

 Edition 2025 / 2026



VERSATILE AND DIRECT FROM MANUFACTURER OUR PORTFOLIO



Since 2008, Intech Worldwide GmbH has been successfully producing plastic transport packaging. Family-owned with a background in the food industry, Intech develops and produces crates and pallets using injection moulding processes. Furthermore, Intech has thermoforming lines to produce precision industrial parts.

Intech offers you a versatile range of crates and pallets for use in storage and transport as well as on automated material handling systems.

We meet the European packaging guidelines and all hygiene requirements for the food industry.

When it comes to individually labelling and marking the crates and pallets, we offer

our customers a wide variety of solutions as well as a large range of colours.

Intech has its very own company fleet and large warehouse space, which guarantees that we are flexible and always ready to deliver.

If you do not find a suitable solution from among our many crates and pallets, our construction team will develop a custom solution together with you. The Intech tool makers will quickly meet your requirements.

Please do not hesitate to get in touch, we are happy to help.

Yours, the Intech-Team

| | | | | |
|---|---|--|---|--|
| INTECH GREEN Page 4-5  | HYGIENIC PALLETS Page 6  | MEDIUM PALLETS Page 7-17  | LIGHT PALLETS Page 18-27  | MEAT Page 28-33  |
| BAKED GOODS Page 34-35  | AGRICULTURE Page 36-39  | INDUSTRY Page 40  | RETAIL Page 42-45  | BEVERAGES Page 46-47  |
| THERMO-FORMING Page 48  | DEVELOPMENT & TOOL MAKING Page 50-51  | FINISHING & IDENTIFICATION Page 52-53  | STORAGE & SHIPPING Page 54  | SHIPPING FOOD Page 55  |

Hanover headquarters



WE ARE SUSTAINABLE!

CO₂ FOOTPRINT

Environmental awareness is growing, and climate change is accelerating this positive trend. This awareness is focused on reducing CO₂ emissions.

A CO₂ footprint or carbon footprint is a way to measure emissions of CO₂ due to the consumption of fossil fuels in the areas of transportation, power generation, heat production, traffic, and consumption.

Contrary to common assumptions, plastic pallets achieve better results than their wooden counterparts from an ecological standpoint. The difference is even more clear if we compare our reusable containers with disposable packaging.



Thanks to the significantly longer service life of plastic pallets and reusable containers, they do not need to be replaced as often. This positive circumstance as well as the possibility to reduce the volume of these transport packaging (folding, collapsing & nesting) means fewer transports. In addition, it can be recycled more easily and is lighter weight. **All of these factors help significantly reduce emissions.**

Intech also produces green power! Our photovoltaic system delivers over 740 kWp (kilowatt peak). We use solar energy to produce reusable packaging. **This is a climate-friendly approach, and our path to an ecological future.**

PLASTIC PALLETS vs. EURO PALLETS

Sustainability and service life advantages and disadvantages



Plastic pallet



Euro pallet

| | | |
|--|---|--------------------------------------|
| Service life | 23-26 rotations (Medium pallet Multi-Line) approx. 3-4 years | 10-13 rotations approx. 1-2 years |
| CO ₂ footprint | 50 % smaller than Euro pallets | |
| Loss rate | 60 % lower than Euro pallets | |
| Recycling rate 100 % (pallet return & material tempering) | ✓ | ✗ |
| Produced from 100 % PCR plastic (100 % recycled material) | ✓ | ✗ |
| Consistent quality (maintenance and repair free) | ✓ | ✗ |
| Unit weight | constant | 20-24 kg (depending on moisture) |
| Mold, wetness, splinters, rusty nails | impossible | common |

CIRCULAR ECONOMY



RECYCLE INSTEAD OF DISPOSING

With our sustainability program "Intech Green," we commit to using high-quality recycled materials made of 100 % PCR plastics. Post-consumer recycled materials (PCR) are plastics re-processed from household or commercial waste, the majority of which come from packaging. Intech processes over 15,000 tons of these materials each year, giving

these valuable raw materials a new life. At the end of their service life, we take back containers and pallets, recycle their materials once again, and close the cycle. **Our recycling rate is 100 % – fully in line with the concept of the circular economy.**

THE PCR CYCLE

POST-CONSUMER RECYCLED PLASTIC



REUSABLE, NOT DISPOSABLE

Our reusable transport packaging items are durable, reusable for many years and will be 100 % recycled at the end of their life-circles.

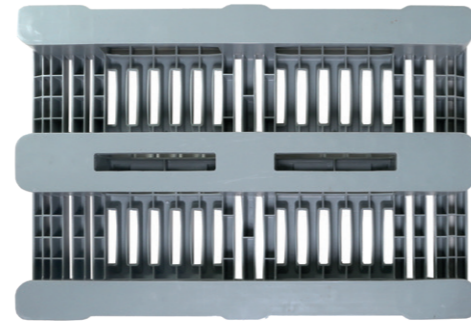
They replace disposable packaging like cardboards or plastic films in a climate-friendly manner and improving the CO₂ balance for the long-term.



HYGIENIC PALLETS

HYGIENIC PLASTIC PALLETS

Hygienic pallets from Intech are primarily used in industries with mandatory hygienic storage and transportation conditions. Thanks to their standardized exterior dimensions of 1,200 x 800 mm, hygienic pallets made of plastic are ideal for combining with standardized stacking containers.



Hygiene pallet EURO H1 (corresponds to DIN 55423-5 / DIN 55423-6)

| | |
|-----------------------------|---|
| External dimensions: | 1,200 x 800 x 160 mm (L x W x H) |
| Load capacity: | 1,250 kg dynamic / 5,000 kg static / 1,000 kg high rack |
| Version: | 3 runners welded |
| Unit weight: | 18.0 kg |
| Material: | HD-PE virgin |
| Colour: | grey |
| Options: | with or without perimetric rims with or without central rims central runner completely closed alternative colours on request |



MEDIUM PALLETS

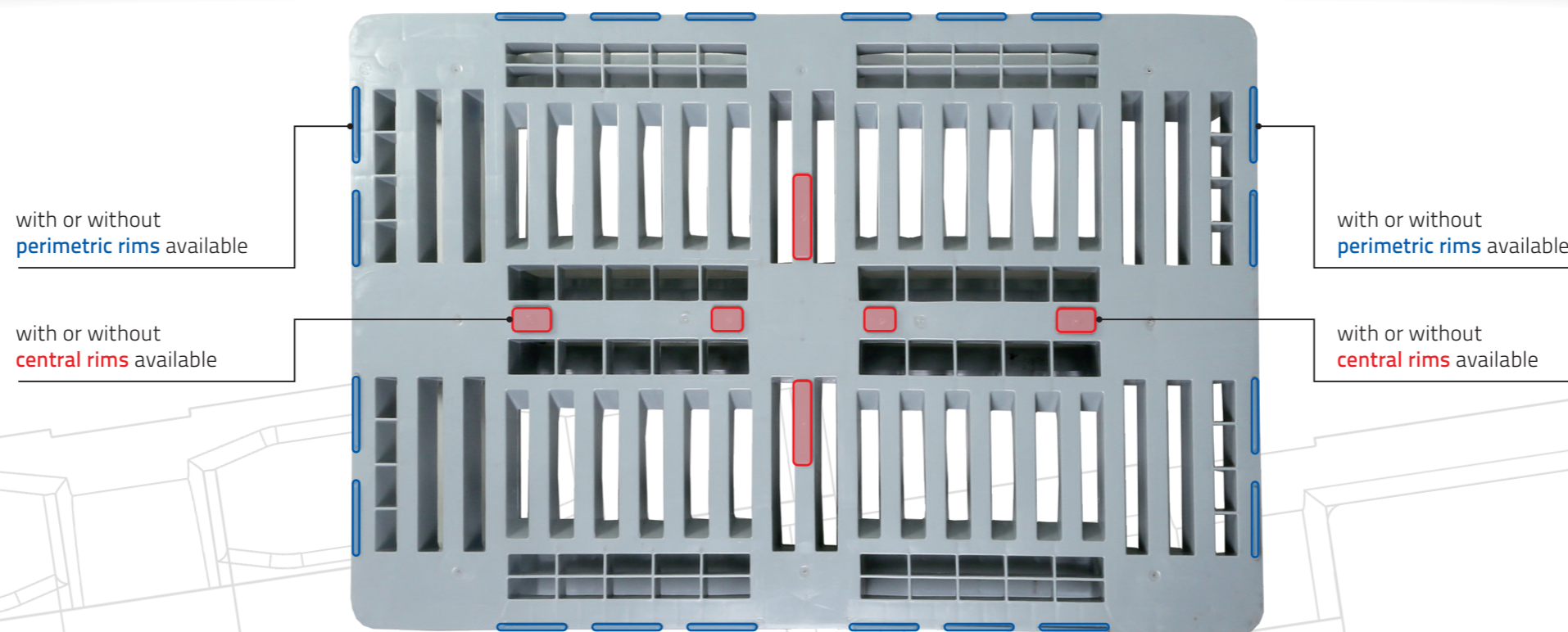
MEDIUM PALLET BLACK LINE



One key advantage of plastic pallets from Intech is that they are easy to clean. Moisture cannot be absorbed by the pallet, thereby preventing the accumulation of germs and bacteria. Because they are resistant to heat and cold, Intech plastic pallets can be used in a wide range of industries.

Medium pallet Black-Line

| | |
|-----------------------------|--|
| External dimensions: | 1,200 x 800 x 155 mm (L x W x H) |
| Load capacity: | 1,250 kg dynamic / 5,000 kg static / 650 kg high rack (unwelded) 800 kg high rack (runners welded) |
| Version: | 3 runners unwelded |
| Unit weight: | 18.0 kg with welded runners / 16.0 kg unwelded |
| Material: | HD-PE regranulate |
| Colour: | black |
| Options: | with welded runners with or without perimetric rims with or without central rims central runner completely closed |



MEDIUM PALLETS

MEDIUM PALLET SERIES MULTI-LINE

Medium pallets are robust all-rounders. Thanks to the many available options, our Multi-Line medium pallet series is versatile and multifunctional, with a load capacity that falls between our light and hygienic pallets. The Intech Multi-Line is suitable for global exports and with steel reinforcements optimally equipped for use in high-bay warehouses.

The gridded multiple openings on the upper deck can be used to set up displays or to attach plastic wedges for load securing.

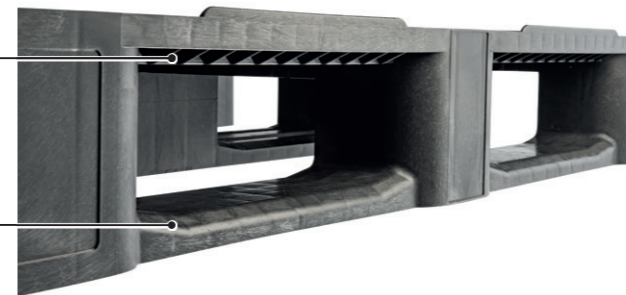


Great design – Your benefits

- Recessed protective windows for printing and labeling
- With 4 corner elements to fix packaging films
- Chamfered edges on all four sides of the deck and on the runners guarantee perfect handling with industrial trucks
- Rounded edges reduce the risk of damage
- Can be equipped with RFID transponders

MEDIUM PALLETS

MEDIUM PALLET SERIES MULTI-LINE

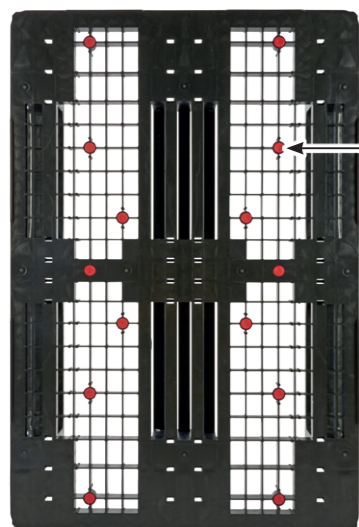


Multifunctional – Your options

- With or without safety rims (7 mm or 22 mm)
- Two-sided rubber blocks running from the top of the deck to the bottom of the deck to prevent slippage on industrial trucks
- Corrosion-free steel bars in the pallet deck (2, 3 or 4 pieces) for a load capacity up to 1,450 kg in high racks
- 2 or 3 runners (closed deck versions)
- EURO or ISO format
- Double rims for ring attachment (foldable large load carrier)
- Plastic wedges for load securing

Medium pallet Multi-Line ML800

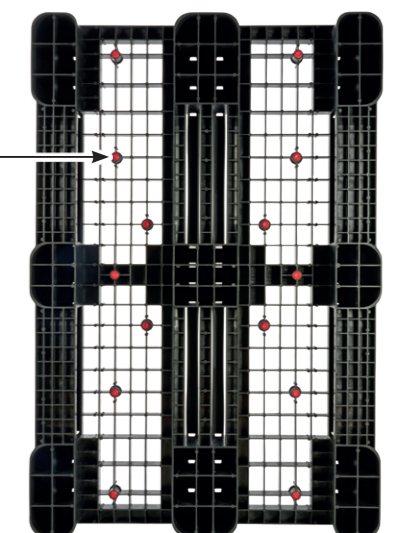
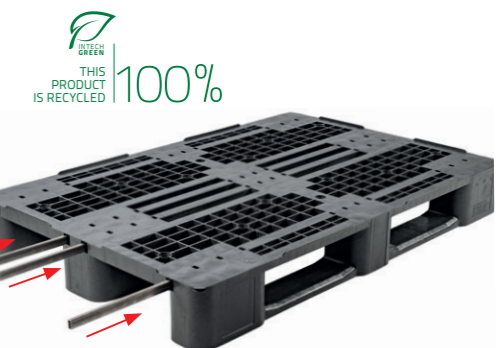
| | |
|-----------------------------|--|
| Item no.: | ML-OD-12080-10 |
| External dimensions: | 1,200 x 800 x 145 mm (L x W x H) |
| Load capacity: | 1,300 kg dynamic / 5,000 kg static / 550 kg high rack |
| Version: | 3 runners unwelded, open deck |
| Temperature range: | -40 °C to +70 °C |
| Unit weight: | 11.0 kg |
| Material: | HD-PE regranulate / HD-PE virgin (grey) |
| Colour: | black or grey |
| Options: | with or without safety rims (7 mm or 22 mm) rubber blocks for anti-slipping, two-sided (top and bottom of the deck, up to 14 pieces, 8 short, 6 long) corrosion-free steel bars in the pallet deck (2, 3 or 4 pieces) double rims for ring attachment (foldable large load carrier) plastic wedges for load securing RFID transponder |



Top of the deck

Medium pallet Multi-Line ML800 S4

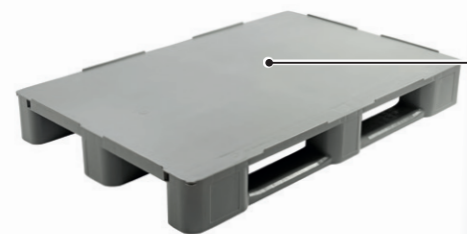
| | |
|-----------------------------|--|
| Item no.: | ML-OD-12080-10-4S |
| External dimensions: | 1,200 x 800 x 145 mm (L x W x H) |
| Load capacity: | 1,600 kg dynamic / 7,000 kg static / 1,300 kg high rack |
| Version: | 3 runners unwelded, open deck, 4 steel bars |
| Temperature range: | -40 °C to +70 °C |
| Unit weight: | 13.7 kg |
| Material: | HD-PE regranulate / HD-PE virgin (grey) |
| Colour: | black or grey |
| Options: | with or without safety rims (7 mm or 22 mm) rubber blocks for anti-slipping, two-sided (top and bottom of the deck, up to 14 pieces, 8 short, 6 long) corrosion-free steel bars in the pallet deck (2, 3 or 4 pieces) double rims for ring attachment (foldable large load carrier) plastic wedges for load securing RFID transponder |



Bottom of the deck

MEDIUM PALLETS

MEDIUM PALLET SERIES MULTI-LINE



Medium pallet Multi-Line ML800GD 2K

| | |
|-----------------------------|---|
| Item no.: | ML-GD-12080-10-2K |
| External dimensions: | 1,200 x 800 x 145 mm (L x W x H) |
| Load capacity: | 1,300 kg dynamic / 5,000 kg static / 550 kg high rack |
| Version: | 2 runners unwelded, closed deck |
| Temperature range: | -40 °C to +70 °C |
| Unit weight: | 12.5 kg |
| Material: | HD-PE regranulate / HD-PE virgin (grey) |
| Colour: | black or grey |
| Options: | with or without safety rims (7 mm or 22 mm) rubber blocks for anti-slipping, one-sided (bottom of the deck, up to 14 pieces) corrosion-free steel bars in the pallet deck (2 pieces) 2 or 3 runners double rims for ring attachment (foldable large load carrier) plastic wedges for load securing RFID transponder |

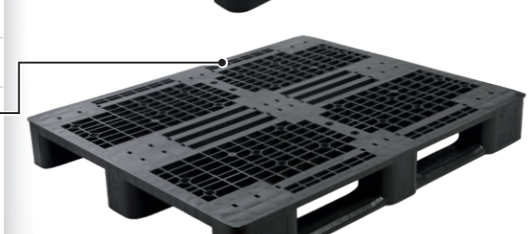


Medium pallet Multi-Line ML800GD 3K

| | |
|-----------------------------|---|
| Item no.: | ML-GD-12080-10-3K |
| External dimensions: | 1,200 x 800 x 145 mm (L x W x H) |
| Load capacity: | 1,500 kg dynamic / 6,000 kg static / 650 kg high rack |
| Version: | 3 runners unwelded, closed deck |
| Temperature range: | -40 °C to +70 °C |
| Unit weight: | 13.8 kg |
| Material: | HD-PE regranulate / HD-PE virgin (grey) |
| Colour: | black or grey |
| Options: | with or without safety rims (7 mm or 22 mm) rubber blocks for anti-slipping, one-sided (bottom of the deck, up to 14 pieces) corrosion-free steel bars in the pallet deck (2 pieces) 2 or 3 runners double rims for ring attachment (foldable large load carrier) plastic wedges for load securing RFID transponder |

MEDIUM PALLETS

MEDIUM PALLET SERIES MULTI-LINE

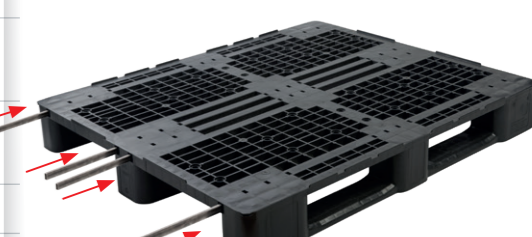


Medium pallet Multi-Line ML1000

| | |
|-----------------------------|--|
| Item no.: | ML-OD-120100-10 |
| External dimensions: | 1,200 x 1,000 x 145 mm (L x W x H) |
| Load capacity: | 1,300 kg dynamic / 5,000 kg static / 550 kg high rack |
| Version: | 3 runners unwelded, open deck |
| Temperature range: | -40 °C to +70 °C |
| Unit weight: | 12.8 kg |
| Material: | HD-PE regranulate / HD-PE virgin (grey) |
| Colour: | black or grey |
| Options: | with or without safety rims (7 mm or 22 mm) rubber blocks for anti-slipping, two-sided (top and bottom of the deck, up to 28 pieces, 16 short, 12 long) corrosion-free steel bars in the pallet deck (2, 3 or 4 pieces) double rims for ring attachment (foldable large load carrier) plastic wedges for load securing RFID transponder |

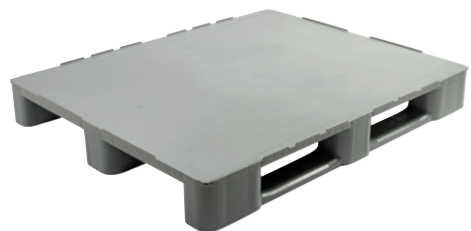
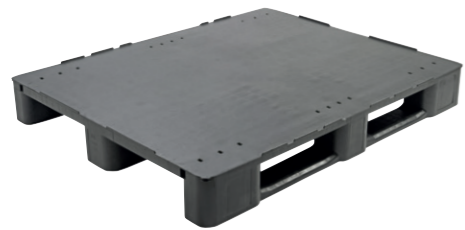
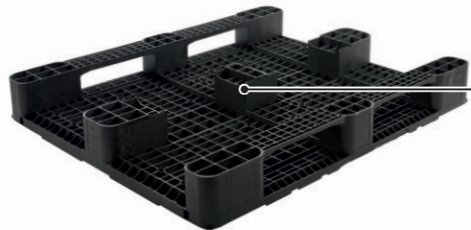
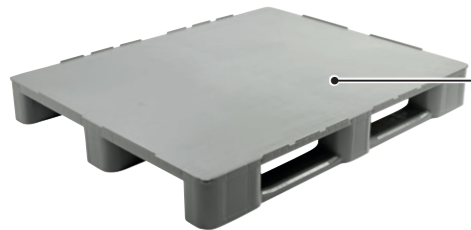
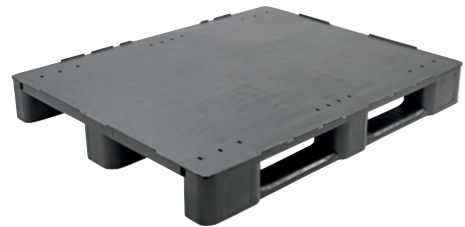
Medium pallet Multi-Line ML1000 S4

| | |
|-----------------------------|--|
| Item no.: | ML-OD-120100-10-4S |
| External dimensions: | 1,200 x 1,000 x 145 mm (L x W x H) |
| Load capacity: | 1,600 kg dynamic / 7,000 kg static / 1,300 kg high rack |
| Version: | 3 runners unwelded, open deck, 4 steel bars |
| Temperature range: | -40 °C to +70 °C |
| Unit weight: | 15.5 kg |
| Material: | HD-PE regranulate / HD-PE virgin (grey) |
| Colour: | black or grey |
| Options: | with or without safety rims (7 mm or 22 mm) rubber blocks for anti-slipping, two-sided (top and bottom of the deck, up to 28 pieces, 16 short, 12 long) corrosion-free steel bars in the pallet deck (2, 3 or 4 pieces) double rims for ring attachment (foldable large load carrier) plastic wedges for load securing RFID transponder |



MEDIUM PALLETS

MEDIUM PALLET SERIES MULTI-LINE



Medium pallet Multi-Line ML1000GD 2K

| | |
|-----------------------------|---|
| Item no.: | ML-GD-120100-10-2K |
| External dimensions: | 1,200 x 1,000 x 145 mm (L x W x H) |
| Load capacity: | 1,300 kg dynamic / 5,000 kg static / 550 kg high rack |
| Version: | 2 runners unwelded, closed deck |
| Temperature range: | -40 °C to +70 °C |
| Unit weight: | 14.2 kg |
| Material: | HD-PE regranulate / <u>HD-PE virgin (grey)</u> |
| Colour: | black or grey |
| Options: | with or without safety rims (7 mm or 22 mm) rubber blocks for anti-slipping, one-sided (bottom of the deck, up to 28 pieces) corrosion-free steel bars in the pallet deck (2 pieces) 2 or 3 runners double rims for ring attachment (foldable large load carrier) plastic wedges for load securing RFID transponder |

Medium pallet Multi-Line ML1000GD 3K

| | |
|-----------------------------|---|
| Item no.: | ML-GD-120100-10-3K |
| External dimensions: | 1,200 x 1,000 x 145 mm (L x W x H) |
| Load capacity: | 1,500 kg dynamic / 6,000 kg static / 650 kg high rack |
| Version: | 3 runners unwelded, closed deck |
| Temperature range: | -40 °C to +70 °C |
| Unit weight: | 15.5 kg |
| Material: | HD-PE regranulate / HD-PE virgin (grey) |
| Colour: | black or grey |
| Options: | with or without safety rims (7 mm or 22 mm) rubber blocks for anti-slipping, one-sided (bottom of the deck, up to 28 pieces) corrosion-free steel bars in the pallet deck (2 pieces) 2 or 3 runners double rims for ring attachment (foldable large load carrier) plastic wedges for load securing RFID transponder |

PALLET EQUIPMENT

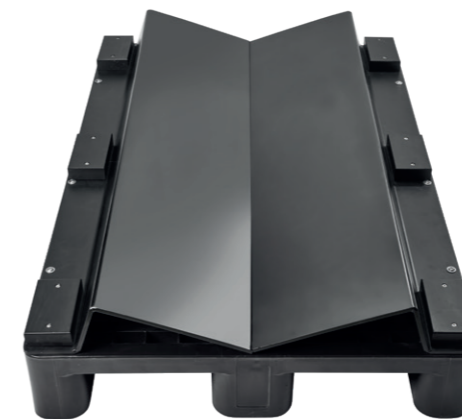
PLASTIC WEDGE SYSTEMS FOR PALLETS

From rolls of paper to steel-coils – round cargo or roll goods require specialized solutions for transporting on pallets.

To minimize the risk of accidents, reliable rollaway protection is essential when storing and transporting round materials.

Round cargo is diverse in terms of its length, diameter, and weight, and our robust wedge systems are just as diverse and variable to handle these differing requirements.

We are happy to develop custom-tailored solutions for our customers.



MEDIUM PALLETS

MULTI-BOXES

Our foldable large load carriers from the Multi-Line series are primarily designed to ensure safe, efficient, and environmentally friendly industrial goods transport.

Thanks to their foldable design, our Multi-Boxes can reduce volume by up to 80 %, significantly lowering transportation and storage costs.



Intech Multi-Boxes – Your benefits

- Excellent product protection
- Foldable, allows a volume reduction of up to 80 %
- 50 % lighter than mesh boxes
- Available with system cover



Multi-Box MB800

| | |
|-----------------------------|---|
| Item no.: | MB-12080 |
| External dimensions: | 1,200 x 800 x 925 mm (L x W x H) |
| Internal dimensions: | 1,160 x 760 x 780 mm (L x W x H) |
| Version: | entirely closed |
| Material: | PP (ring) |
| Colour: | grey (ring) |
| Options: | carrier pallet selectable from the Multi-Line series various ring heights available ring with unloading flap on the long side available with system cover corrosion-free steel bars in the pallet deck (2, 3 or 4 pieces) RFID transponder |



80 % volume reducible



MEDIUM PALLETS

MULTI-BOXES



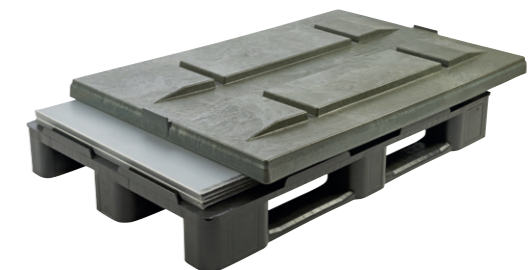
Intech Multi-Boxes are perfectly tailored to the needs of the modern circular economy:

- Cover and pallet are made of recycled plastic
- The entire system is 100 % recyclable at the end of its service life
- Significant reduction of CO₂ emissions in the supply chain



Multi-Box MB1000

| | |
|-----------------------------|---|
| Item no.: | MB-120100 |
| External dimensions: | 1,200 x 1,000 x 925 mm (L x W x H) |
| Internal dimensions: | 1,160 x 960 x 780 mm (L x W x H) |
| Version: | entirely closed |
| Material: | PP (ring) |
| Colour: | grey (ring) |
| Options: | carrier pallet selectable from the Multi-Line series various ring heights available ring with unloading flap on the long side available with system cover corrosion-free steel bars in the pallet deck (2, 3 or 4 pieces) RFID transponder |



MEDIUM PALLETS

MEDIUM PALLET SERIES MULTI-LINE VERSIONS AND LOAD CAPACITIES

MEDIUM PALLETS

One pallet, limitless possibilities ...

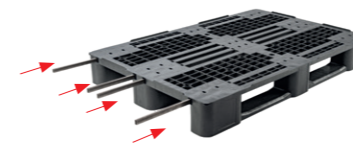


| Multi-Line version | Pallet deck | Material | Runners piece | Steel bars piece | Unit weight kg | Load capacity static kg | Load capacity dynamic kg | Load capacity high rack [2 crossbars] kg | |
|--------------------------------|-------------|----------|------------------|---------------------|-------------------|----------------------------|-----------------------------|--|-----|
| ML800 1,200 x 800 mm | ML800 | open | 3 | without | 11.0 | 5,000 | 1,300 | 550 | |
| | ML800 | open | 3 | without | 11.0 | 5,500 | 1,350 | 600 | |
| | ML800 S2 | open | 3 | 2 | 12.4 | 6,000 | 1,400 | 800 | |
| | ML800 S2 | open | 3 | 2 | 12.4 | 6,500 | 1,450 | 850 | |
| | ML800 S3 | open | 3 | 3 | 13.0 | 7,000 | 1,500 | 1,000 | |
| | ML800 S3 | open | 3 | 3 | 13.0 | 7,500 | 1,550 | 1,050 | |
| | ML800 S4 | open | 3 | 4 | 13.7 | 7,000 | 1,600 | 1,300 | |
| | ML800 S4 | open | 3 | 4 | 13.7 | 7,500 | 1,650 | 1,350 | |
| | ML800GD 2K | closed | regranulate | 2 | without | 12.5 | 5,000 | 1,300 | 550 |
| | ML800GD 2K | closed | virgin | 2 | without | 12.5 | 5,500 | 1,350 | 600 |
| | ML800GD 3K | closed | regranulate | 3 | without | 13.8 | 6,000 | 1,500 | 650 |
| | ML800GD 3K | closed | virgin | 3 | without | 13.8 | 6,500 | 1,550 | 700 |
| | ML800GD S2 | closed | regranulate | 3 | 2 | 15.2 | 7,000 | 1,600 | 900 |
| | ML800GD S2 | closed | virgin | 3 | 2 | 15.2 | 7,500 | 1,650 | 950 |

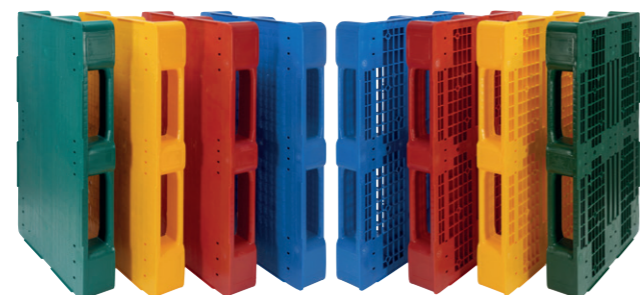
| | | | | | | | | | |
|-----------------------------------|-------------|--------|-------------|---------|---------|-------|-------|-------|-----|
| ML1000 1,200 x 1,000 mm | ML1000 | open | 3 | without | 12.8 | 5,000 | 1,300 | 550 | |
| | ML1000 | open | 3 | without | 12.8 | 5,500 | 1,350 | 600 | |
| | ML1000 S2 | open | 3 | 2 | 14.2 | 6,000 | 1,400 | 800 | |
| | ML1000 S2 | open | 3 | 2 | 14.2 | 6,500 | 1,450 | 850 | |
| | ML1000 S3 | open | 3 | 3 | 14.8 | 7,000 | 1,500 | 1,000 | |
| | ML1000 S3 | open | 3 | 3 | 14.8 | 7,500 | 1,550 | 1,050 | |
| | ML1000 S4 | open | 3 | 4 | 15.5 | 7,000 | 1,600 | 1,300 | |
| | ML1000 S4 | open | 3 | 4 | 15.5 | 7,500 | 1,650 | 1,350 | |
| | ML1000GD 2K | closed | regranulate | 2 | without | 14.2 | 5,000 | 1,300 | 550 |
| | ML1000GD 2K | closed | virgin | 2 | without | 14.2 | 5,500 | 1,350 | 600 |
| | ML1000GD 3K | closed | regranulate | 3 | without | 15.5 | 6,000 | 1,500 | 650 |
| | ML1000GD 3K | closed | virgin | 3 | without | 15.5 | 6,500 | 1,550 | 700 |
| | ML1000GD S2 | closed | regranulate | 3 | 2 | 16.9 | 7,000 | 1,600 | 900 |
| | ML1000GD S2 | closed | virgin | 3 | 2 | 16.9 | 7,500 | 1,650 | 950 |



| | Unit weight per piece | ML800 up to 14 pieces | ML1000 up to 28 pieces |
|--|--------------------------|--------------------------|---------------------------|
| rubber blocks for anti-slipping, short (31 mm) | 6 g | 8 | 16 |
| rubber blocks for anti-slipping, long (46 mm) material TPE | 7 g | 6 | 12 |



| | Unit weight per piece | ML800 | ML1000 | ML800GD | ML1000GD |
|--|--------------------------|------------------|------------------|----------|----------|
| Steel bars suitable for all Multi-Line versions 1,158 mm x 20 mm x 10 mm | 680 g | 2, 3 or 4 pieces | 2, 3 or 4 pieces | 2 pieces | 2 pieces |



| | Unit weight per piece | ML800GD | ML1000GD |
|---|--------------------------|----------|----------|
| Plug-in runners (form third runners) | 650 g | 2 pieces | 2 pieces |

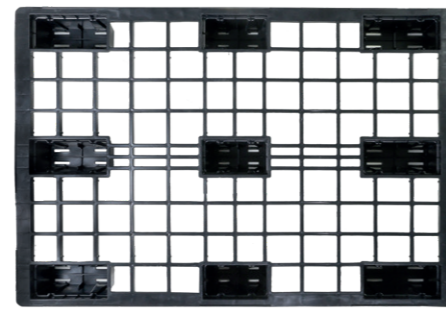
LIGHT PALLETS

LIGHT PALLET SERIES ECO

Intech light pallets stand out for their low unit weight. They impress, however, by offering a high load capacity and are an outstanding choice for export applications.

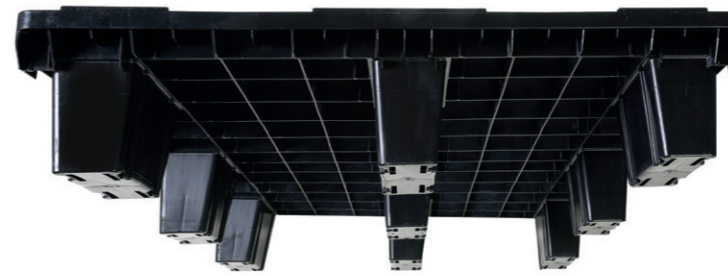
The light pallets can be stacked one inside the other (nestable) to save space – up to 2,356 pallets per truck are possible. When we attach click-runners the Intech light pallets are

even more stable and moreover well prepared for professional block stacking. Furthermore, the light pallets with click-runners are ready for utilization in modern high racks.



LIGHT PALLETS

LIGHT PALLET SERIES ECO



Light pallet IT800GD ECO

| | |
|-----------------------------|--|
| Item no.: | EP-GD-12080-10-ECO |
| External dimensions: | 1,200 x 800 x 153 mm (L x W x H) |
| Load capacity: | 1,200 kg dynamic / 2,500 kg static |
| Version: | 9 feet (nestable), closed deck |
| Temperature range: | -40 °C to +70 °C |
| Unit weight: | 5.7 kg |
| Material: | HD-PE regranulate |
| Colour: | black |
| Options: | with or without safety rims, click-runners available |

Light pallet IT1000GD ECO

| | |
|-----------------------------|--|
| Item no.: | EP-GD-120100-10-ECO |
| External dimensions: | 1,200 x 1,000 x 153 mm (L x W x H) |
| Load capacity: | 1,200 kg dynamic / 2,500 kg static |
| Version: | 9 feet (nestable), closed deck |
| Temperature range: | -40 °C to +70 °C |
| Unit weight: | 7.3 kg |
| Material: | HD-PE regranulate |
| Colour: | black |
| Options: | with or without safety rims, click-runners available |

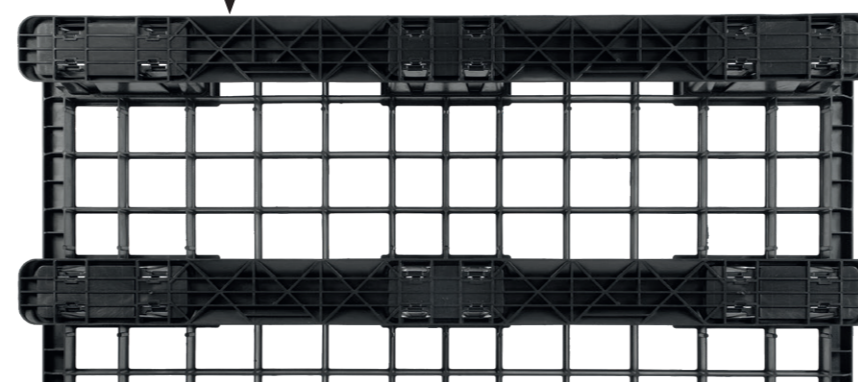


Light pallet IT800 ECO

| | |
|-----------------------------|--|
| Item no.: | EP-OD-12080-10-ECO |
| External dimensions: | 1,200 x 800 x 153 mm (L x W x H) |
| Load capacity: | 1,000 kg dynamic / 2,500 kg static |
| Version: | 9 feet (nestable), open deck |
| Temperature range: | -40 °C to +70 °C |
| Unit weight: | 4.5 kg |
| Material: | HD-PE regranulate |
| Colour: | black or <u>grey</u> |
| Options: | with or without safety rims, click-runners available |

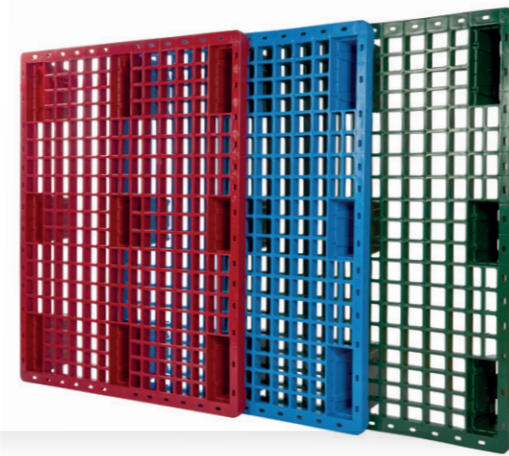
Light pallet IT1000 ECO

| | |
|-----------------------------|--|
| Item no.: | EP-OD-120100-10-ECO |
| External dimensions: | 1,200 x 1,000 x 153 mm (L x W x H) |
| Load capacity: | 1,000 kg dynamic / 2,500 kg static |
| Version: | 9 feet (nestable), open deck |
| Temperature range: | -40 °C to +70 °C |
| Unit weight: | 6.0 kg |
| Material: | HD-PE regranulate |
| Colour: | black |
| Options: | with or without safety rims, click-runners available |



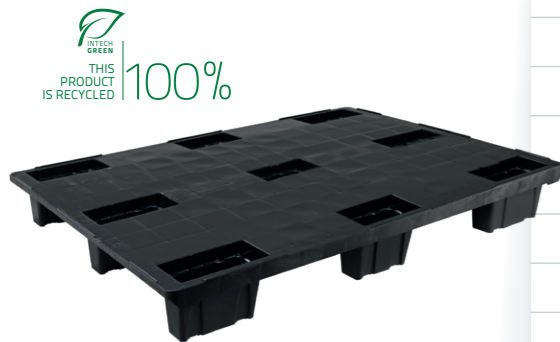
LIGHT PALLETS

LIGHT PALLET SERIES STANDARD



Light pallet IT800GD STANDARD

| | |
|-----------------------------|--|
| Item no.: | EP-GD-12080-10-STANDARD |
| External dimensions: | 1,200 x 800 x 153 mm (L x W x H) |
| Load capacity: | 1,300 kg dynamic / 2,500 kg static |
| Version: | 9 feet (nestable), closed deck |
| Temperature range: | -40 °C to +70 °C |
| Unit weight: | 6.2 kg |
| Material: | HD-PE regranulate |
| Colour: | black |
| Options: | with or without safety rims, click-runners available |



Light pallet IT800 STANDARD

| | |
|-----------------------------|--|
| Item no.: | EP-OD-12080-10-STANDARD |
| External dimensions: | 1,200 x 800 x 153 mm (L x W x H) |
| Load capacity: | 1,100 kg dynamic / 2,500 kg static |
| Version: | 9 feet (nestable), open deck |
| Temperature range: | -40 °C to +70 °C |
| Unit weight: | 5.0 kg |
| Material: | HD-PE regranulate |
| Colour: | black |
| Options: | with or without safety rims, click-runners available |



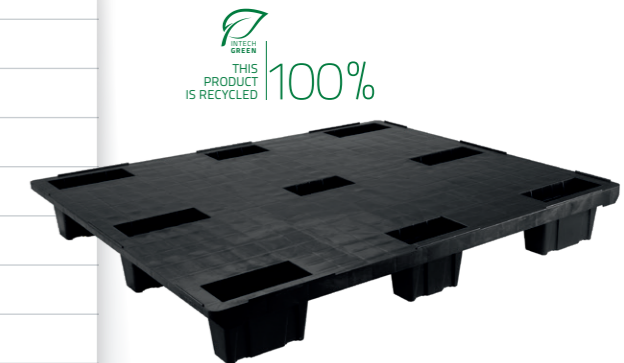
LIGHT PALLETS

LIGHT PALLET SERIES STANDARD



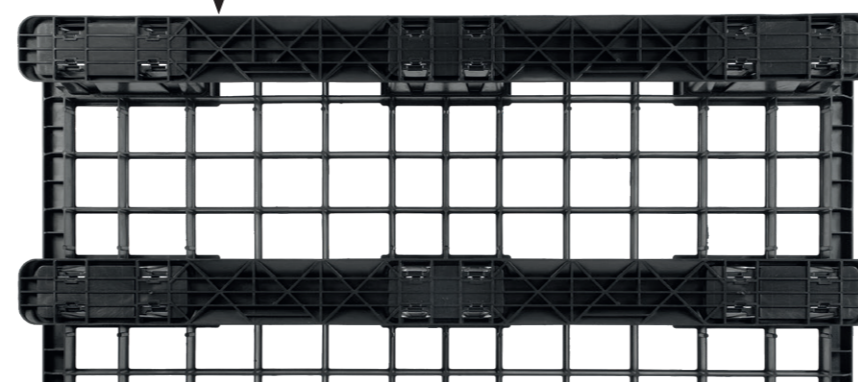
Light pallet IT1000GD STANDARD

| | |
|-----------------------------|--|
| Item no.: | EP-GD-120100-10-STANDARD |
| External dimensions: | 1,200 x 1,000 x 153 mm (L x W x H) |
| Load capacity: | 1,300 kg dynamic / 2,500 kg static |
| Version: | 9 feet (nestable), closed deck |
| Temperature range: | -40 °C to +70 °C |
| Unit weight: | 7.8 kg |
| Material: | HD-PE regranulate |
| Colour: | black |
| Options: | with or without safety rims, click-runners available |



Light pallet IT1000 STANDARD

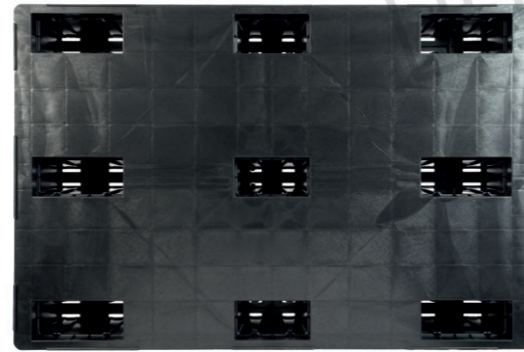
| | |
|-----------------------------|--|
| Item no.: | EP-OD-120100-10-STANDARD |
| External dimensions: | 1,200 x 1,000 x 153 mm (L x W x H) |
| Load capacity: | 1,100 kg dynamic / 2,500 kg static |
| Version: | 9 feet (nestable), open deck |
| Temperature range: | -40 °C to +70 °C |
| Unit weight: | 6.5 kg |
| Material: | HD-PE regranulate |
| Colour: | black |
| Options: | with or without safety rims, click-runners available |



LIGHT PALLETS

LIGHT PALLET SERIES PLUS

The Intech PLUS series – our popular light pallets with an even higher load capacity and increased unit weight.



Light pallet IT800GD PLUS

| | |
|-----------------------------|--|
| Item no.: | EP-GD-12080-10-PLUS |
| External dimensions: | 1,200 x 800 x 153 mm (L x W x H) |
| Load capacity: | 1,400 kg dynamic / 2,500 kg static |
| Version: | 9 feet (nestable), closed deck |
| Temperature range: | -40 °C to +70 °C |
| Unit weight: | 7.0 kg |
| Material: | HD-PE regranulate |
| Colour: | black |
| Options: | with or without safety rims, click-runners available |

Light pallet IT800 PLUS

| | |
|-----------------------------|--|
| Item no.: | EP-OD-12080-10-PLUS |
| External dimensions: | 1,200 x 800 x 153 mm (L x W x H) |
| Load capacity: | 1,200 kg dynamic / 2,500 kg static |
| Version: | 9 feet (nestable), open deck |
| Temperature range: | -40 °C to +70 °C |
| Unit weight: | 5.9 kg |
| Material: | HD-PE regranulate |
| Colour: | black |
| Options: | with or without safety rims, click-runners available |



LIGHT PALLET EQUIPMENT

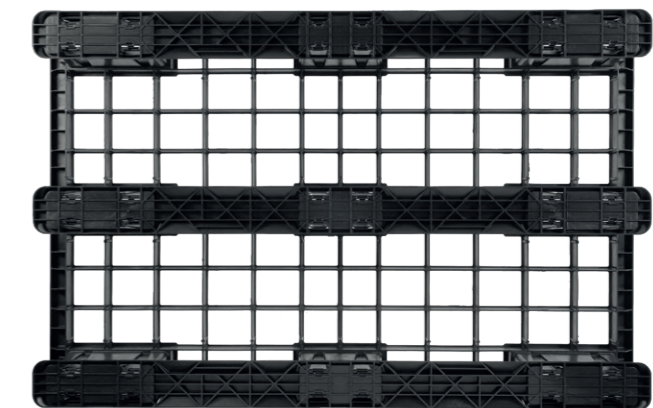
CLICK-RUNNERS

The Intech light pallets can optionally be equipped with clip-pable runners. The Intech click-runners are matching for all Intech models and can be removed without damage after use. With click-runners the Intech light pallets are even more stable and moreover well prepared for professional block stacking. Furthermore, the light pallets are ready for utilization in modern high racks.



Click-runner (clippable runner for Intech light pallets)

| | |
|-----------------------------|--------------------------------|
| Item no.: | EP-KK-10 |
| External dimensions: | 1,177 x 92 x 26 mm (L x W x H) |
| Temperature range: | -40 °C to +70 °C |
| Unit weight: | 0.43 kg |
| Material: | HD-PE regranulate |
| Colour: | black |



LIGHT PALLETS

HALF PALLETS

The innovative Intech half pallets impress with their robust construction and deep nestability in the stack.

Space-saving and durable, the IT600 formats maximize supply chain efficiency and minimize storage costs.



LIGHT PALLETS

HALF PALLETS

Tailored to your needs:

- Space-saving thanks to the deep nestability in the stack (36 mm)
- Anti-slip edge (without or 5 mm)
- produced from 100 % recycled plastic (PCR)
- with 6 or 9 feet, for use as a 2- or 4-way-pallet

Half pallet IT600 6F

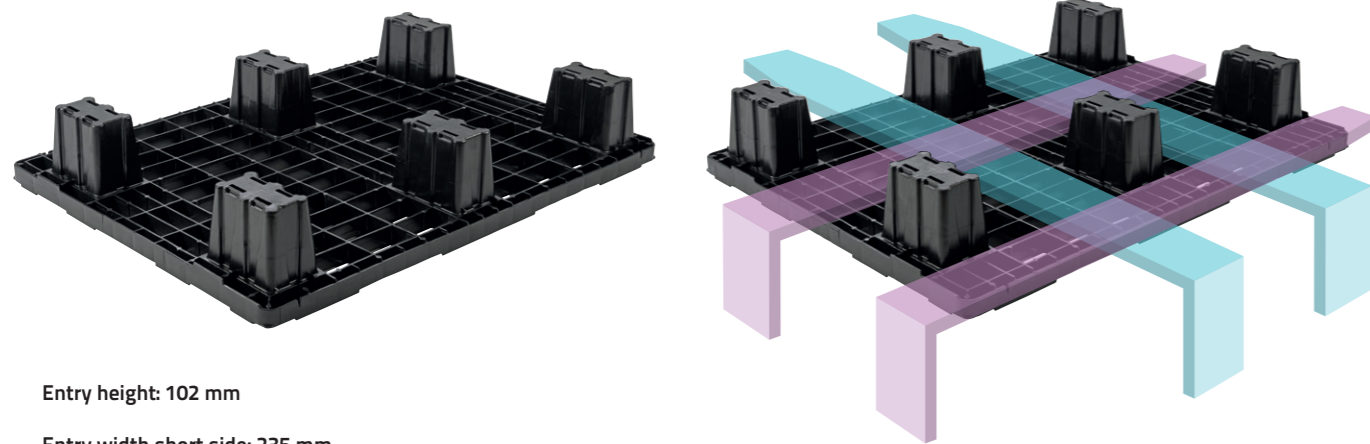
| | |
|-----------------------------|-------------------------------------|
| Item no.: | EP-OD-8060-10-6F |
| External dimensions: | 800 x 600 x 130 mm (L x W x H) |
| Load capacity: | 500 kg dynamic / 1,300 kg static |
| Version: | 6 feet (nestable), open deck, 4-way |
| Temperature range: | -40 °C bis +70 °C |
| Unit weight: | 2.6 kg |
| Material: | HD-PE regranulate |
| Colour: | black |
| Options: | with or without safety rims, 9 feet |

Half pallet IT600 9F

| | |
|-----------------------------|-------------------------------------|
| Item no.: | EP-OD-8060-10-9F |
| External dimensions: | 800 x 600 x 130 mm (L x W x H) |
| Load capacity: | 600 kg dynamic / 1,400 kg static |
| Version: | 9 feet (nestable), open deck, 2-way |
| Temperature range: | -40 °C bis +70 °C |
| Unit weight: | 2.9 kg |
| Material: | HD-PE regranulate |
| Colour: | black |
| Options: | with or without safety rims, 6 feet |

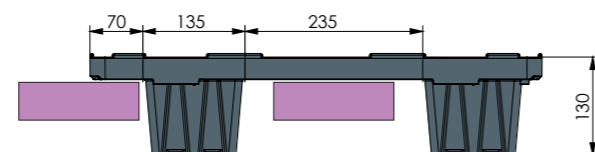
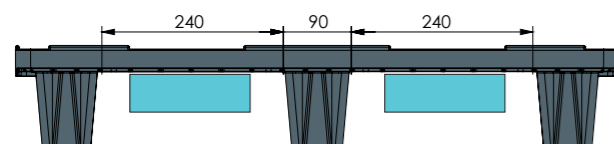


4-ways

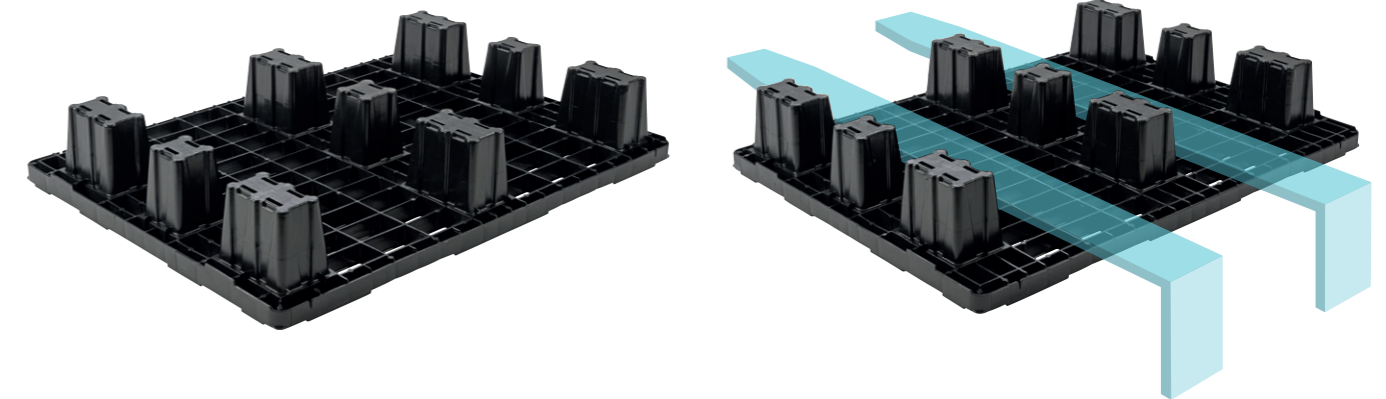


Entry height: 102 mm

Entry width short side: 235 mm
Entry width long side: 240 mm



2-ways



LIGHT PALLETS

PLASTIC PALLETS vs. WOODEN PALLETS

Packaging type general cargo
45 light pallets per stack
Corresponds to a height of 2.11 m

15 Euro pallets
Corresponds to a height of 2.16 m



Packaging type standard trailer
55 light pallets per stack
Corresponds to a height of 2.54 m



INTECH GREEN
THIS PRODUCT IS RECYCLED 100%



INTECH GREEN
THIS PRODUCT IS RECYCLED 100%

LIGHT PALLETS

3 m

Packaging type jumbo truck & mega trailer
62 light pallets per stack
Corresponds to a height of 2.84 m



INTECH GREEN
THIS PRODUCT IS RECYCLED 100%



Contrary to common assumptions, plastic pallets achieve better results than their wooden counterparts from an ecological standpoint. The difference is even more clear if we compare our reusable containers with disposable packaging.

Thanks to the significantly longer service life of plastic pallets and reusable containers, they do not need to be replaced as often. This positive circumstance as well as the possibility to reduce the volume of these transport packaging (folding, collapsing & nesting) means fewer transports. In addition, it can be recycled more easily and is lighter weight. **All of these factors help significantly reduce emissions.**



OUR PORTFOLIO FOR THE MEAT INDUSTRY

Our largest customer base comes from the meat industry.

We deliver all types of transportation packaging commonly used in this industry – quickly and reliably.

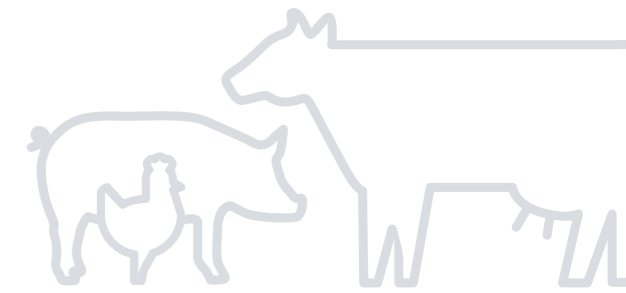
With pallets and crates from Intech, you can transport and store meat and sausage products with the highest hygienic standards.

Our transport packaging items are manufactured from food-safe plastics, easy to clean, extremely durable and complies with DIN 55423.

We meet the European guidelines for packaging as well as all hygienic requirements of the meat and food industry.



MEAT



FOOD CONTAINERS

EURO meat container E1 (corresponds to DIN 55423-1 / DIN 55423-2)

| | |
|-----------------------------|-----------------------------------|
| Item no.: | FK-E1-4612 |
| External dimensions: | 600 x 400 x 125 mm (L x W x H) |
| Internal dimensions: | 570 x 373 x 120 mm (L x W x H) |
| Version: | bottom/sides closed, open handles |
| Unit weight: | 1,500 g |
| Volume: | 25 liter |
| Material: | HD-PE |
| Colour: | your choice of colour |
| Options: | cover and mounting clip available |



EURO meat container E2 (corresponds to DIN 55423-1 / DIN 55423-2)

| | |
|-----------------------------|-----------------------------------|
| Item no.: | FK-E2-4620 |
| External dimensions: | 600 x 400 x 200 mm (L x W x H) |
| Internal dimensions: | 570 x 373 x 195 mm (L x W x H) |
| Version: | bottom/sides closed, open handles |
| Unit weight: | 2,000 g |
| Volume: | 40 liter |
| Material: | HD-PE |
| Colour: | your choice of colour |
| Options: | cover and mounting clip available |

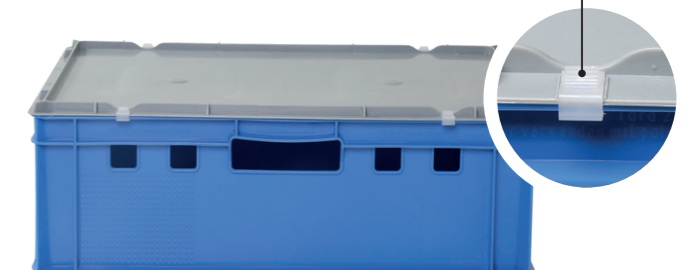


EURO meat container E3 (corresponds to DIN 55423-1 / DIN 55423-2)

| | |
|-----------------------------|-----------------------------------|
| Item no.: | FK-E3-4630 |
| External dimensions: | 600 x 400 x 300 mm (L x W x H) |
| Internal dimensions: | 570 x 373 x 295 mm (L x W x H) |
| Version: | bottom/sides closed, open handles |
| Unit weight: | 3,000 g |
| Volume: | 60 liter |
| Material: | HD-PE |
| Colour: | your choice of colour |
| Options: | cover and mounting clip available |



ergonomic handles



MEAT

POULTRY CRATE

The Intech poultry crate is optimal for transportation and storage of poultry and other meat products. This item is manufactured from food-safe HD-PE, particularly hygienic and easy to clean.

The poultry crate is designed to be stackable one inside the other. The volume can be reduced by simply turning the container. If you rotate the upper container in a stack by

180 degrees, it slides into the container below and the volume is reduced by 51%. This is space-saving, and we can load up to 5,928 empty crates per truck.

The Intech poultry crate with perforated bottom and sides is the right choice specifically for meat products that need to be well-ventilated.



Poultry crate – Your benefits

- Optimal perforations for ventilation of fresh foods
- Space-saving thanks to a high-volume reduction of 51%
- Stable sides, suitable for high loads when stacked
- Stackable and nestable
- Simple handling
- High-quality food safe plastic – 100% recyclable

Poultry crate

| | |
|-----------------------------|---|
| Item no.: | GK-4615-PE |
| External dimensions: | 600 x 400 x 150 mm (L x W x H) |
| Internal dimensions: | top: 558 x 360 x 139 mm (L x W x H) bottom: 541 x 344 mm (conical) (L x W x H) |
| Stack height: | 140 / 68 mm (51% volume reducible) |
| Version: | perforated bottom and sides |
| Unit weight: | 1,500 g |
| Volume: | 27 liter |
| Material: | HD-PE |
| Colour: | your choice of colour |

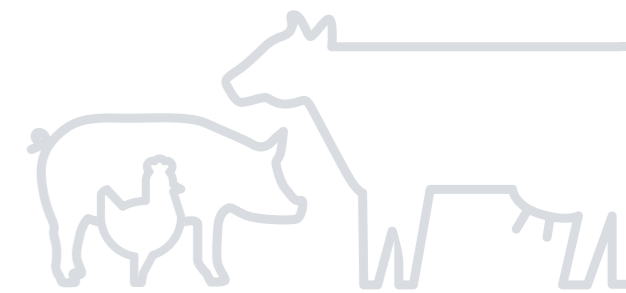


51% volume reducible

MEAT

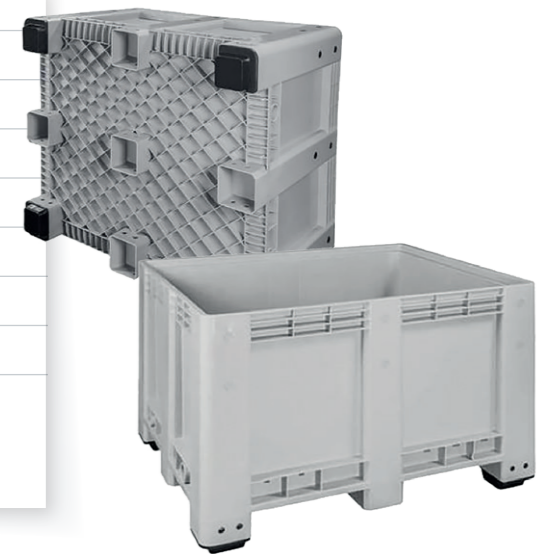
VOLUME BOXES

- Dimensionally stable and impact-resistant
- High-quality food safe plastic – 100% recyclable
- Smooth bottom and sides allow easy cleaning
- Resistant against most acids and bases
- Stackable
- Resistant against infrared and ultraviolet rays



Big Box 4 feet

| | |
|-----------------------------|--|
| Item no.: | HW-BB-4F-120100 |
| External dimensions: | 1,200 x 1,000 x 760 mm (L x W x H) |
| Internal dimensions: | 1,120 x 920 x 600 mm (L x W x H) |
| Version: | entirely closed, with 4 feet |
| Unit weight: | 32.0 kg |
| Volume: | 610 liter |
| Material: | HD-PE |
| Colour: | your choice of colour |
| Options: | cover available perforated bottom and sides closed bottom and perforated sides |



Big Box 3 runners

| | |
|-----------------------------|--|
| Item no.: | HW-BB-3K-120100 |
| External dimensions: | 1,200 x 1,000 x 760 mm (L x W x H) |
| Internal dimensions: | 1,120 x 920 x 600 mm (L x W x H) |
| Version: | entirely closed, with 3 runners |
| Unit weight: | 37.0 kg |
| Volume: | 610 liter |
| Material: | HD-PE |
| Colour: | your choice of colour |
| Options: | cover available perforated bottom and sides closed bottom and perforated sides |





Modern E Performance containers impress thanks to their reinforced design. This helps to ensure that the containers can be frictionless used on conveyor systems and in automated container warehouses. E Performance containers are compatible with the commonly used EURO meat containers and have the same unit weight. Thanks to the specialized in-mould process used, the label applied on all four sides is almost indestructible, allowing the container to easily be identified with the help of a standard scanner.

Performance container E1 (merchandise)



| | |
|-----------------------------|-----------------------------------|
| External dimensions: | 600 x 400 x 125 mm (L x W x H) |
| Internal dimensions: | 570 x 373 x 120 mm (L x W x H) |
| Version: | closed, in mould label four-sided |
| Unit weight: | 1,500 g |
| Volume: | 25 liter |
| Material: | HD-PE |
| Colour: | light blue |
| Options: | cover and mounting clip available |

Performance container E2 (merchandise)



| | |
|-----------------------------|-----------------------------------|
| External dimensions: | 600 x 400 x 200 mm (L x W x H) |
| Internal dimensions: | 570 x 373 x 195 mm (L x W x H) |
| Version: | closed, in mould label four-sided |
| Unit weight: | 2,000 g |
| Volume: | 40 liter |
| Material: | HD-PE |
| Colour: | light blue |
| Options: | cover and mounting clip available |

Performance container E3 (merchandise)



| | |
|-----------------------------|-----------------------------------|
| External dimensions: | 600 x 400 x 300 mm (L x W x H) |
| Internal dimensions: | 570 x 373 x 295 mm (L x W x H) |
| Version: | closed, in mould label four-sided |
| Unit weight: | 3,000 g |
| Volume: | 60 liter |
| Material: | HD-PE |
| Colour: | light blue |
| Options: | cover and mounting clip available |



The Intech brewing container for very high temperature ranges.

- Manufactured from high-quality PP material
- Temperature resistant from -20 °C to +120 °C (short-term during the washing or brewing process)
- Resistant to acids, bases, water, alcohol, oil, and gasoline



Brewing container

| | |
|-----------------------------|--------------------------------|
| Item no.: | BK-4615-PP |
| External dimensions: | 600 x 400 x 150 mm (L x W x H) |
| Internal dimensions: | 570 x 370 x 135 mm (L x W x H) |
| Unit weight: | 1,300 g |
| Volume: | 28 liter |
| Material: | PP |
| Colour: | your choice of colour |



Euro cover 400 x 300 mm

| | |
|-----------------------------|-------------------------------|
| Item no.: | AD-43 |
| External dimensions: | 400 x 300 x 25 mm (L x W x H) |
| Unit weight: | 300 g |
| Material: | PP |
| Colour: | grey |
| Options: | with mounting clip |



Euro cover 600 x 400 mm

| | |
|-----------------------------|---|
| Item no.: | AD-46 |
| External dimensions: | 600 x 400 x 25 mm (L x W x H) |
| Unit weight: | 600 g |
| Material: | PP |
| Colour: | traffic grey, traffic red, brilliant blue |
| Options: | with mounting clip |



OUR PORTFOLIO FOR THE BAKING INDUSTRY

We guarantee the high-quality requirements of the baking industry in accordance with DIN ISO 9001. Items manufactured for direct contact with foods are designated with the „glass and fork symbol“. Intech bakery baskets comply with the current EU regulations no. 10/2011 and no. 1935/2004 as well as the IFS standard.



Bakery basket 9 cm

| | |
|-----------------------------|---|
| Item no.: | BK-4609 |
| External dimensions: | 600 x 400 x 90 mm (L x W x H) |
| Internal dimensions: | 570 x 370 x 75 mm (L x W x H) |
| Version: | perforated bottom and sides, open handles |
| Unit weight: | 900 g |
| Volume: | 15 liter |
| Material: | HD-PE or PP |
| Colour: | your choice of colour |

Bakery basket MEDIUM / HEAVY 15 cm

| | |
|-----------------------------|--|
| Item no.: | BK-4615 |
| External dimensions: | 600 x 400 x 150 mm (L x W x H) |
| Internal dimensions: | 570 x 370 x 135 mm (L x W x H) |
| Version: | perforated bottom, sides completely open or partially closed, open handles |
| Unit weight: | 1,300 g MEDIUM / 1,520 g HEAVY |
| Volume: | 28 liter |
| Material: | HD-PE or PP |
| Colour: | your choice of colour |

BAKED GOODS

BAKERY BASKETS

- Manufactured from high-quality PP or HD-PE material
- PP material temperature resistant from -20 °C to +120 °C (short-term during the washing or pasteurization process)
- HD-PE material temperature resistant from -40 °C to +70 °C
- Resistant to acids, bases, water, alcohol, oil, and gasoline



Bakery basket 23 cm

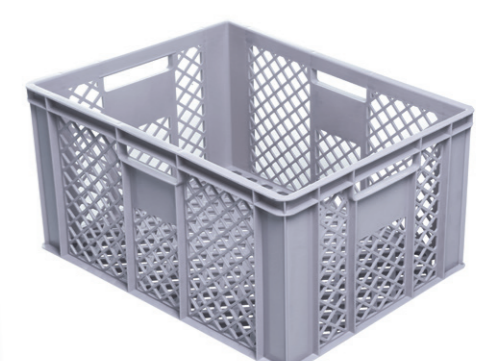
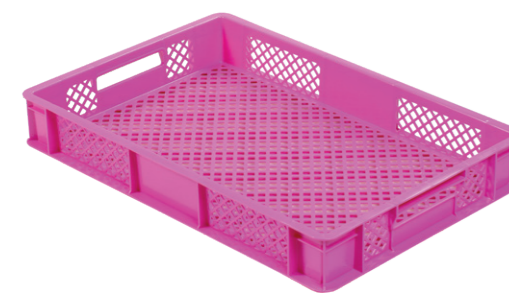
| | |
|-----------------------------|---|
| Item no.: | BK-4623 |
| External dimensions: | 600 x 400 x 230 mm (L x W x H) |
| Internal dimensions: | 570 x 370 x 215 mm (L x W x H) |
| Version: | perforated bottom and sides, open handles |
| Unit weight: | 1,700 g |
| Volume: | 45 liter |
| Material: | HD-PE or PP |
| Colour: | your choice of colour |

Bakery basket 32 cm

| | |
|-----------------------------|---|
| Item no.: | BK-4632 |
| External dimensions: | 600 x 400 x 320 mm (L x W x H) |
| Internal dimensions: | 570 x 370 x 305 mm (L x W x H) |
| Version: | perforated bottom and sides, open handles |
| Unit weight: | 2,100 g |
| Volume: | 64 liter |
| Material: | HD-PE or PP |
| Colour: | your choice of colour |

Bakery basket 41 cm

| | |
|-----------------------------|---|
| Item no.: | BK-4641 |
| External dimensions: | 600 x 400 x 410 mm (L x W x H) |
| Internal dimensions: | 570 x 370 x 395 mm (L x W x H) |
| Version: | perforated bottom and sides, open handles |
| Unit weight: | 2,500 g |
| Volume: | 83 liter |
| Material: | HD-PE or PP |
| Colour: | your choice of colour |



AGRICULTURE

AGRICULTURAL CONTAINERS

Our product range for the agricultural sector includes reusable containers for fruits and vegetables, as well as plant crates for tree nurseries, garden centers, and bulb processors. Fruit and vegetable containers from Intech fulfill the highest hygiene standards, have smooth and easy to clean surfaces, are suitable for automatic washing systems, and retain very little residual moisture after washing.



AGRICULTURE

AGRICULTURAL CONTAINERS



85 % volume reducible

Asparagus crate

| | |
|-----------------------------|---|
| Item no.: | DB-3423 |
| External dimensions: | 430 x 350 x 230 mm (L x W x H) |
| Internal dimensions: | top: 355 x 315 x 225 mm (L x W x H) bottom: 325 x 280 mm (conical) (L x W x H) |
| Version: | bottom and sides closed |
| Unit weight: | 600 g |
| Volume: | 20 liter |
| Material: | PP |
| Colour: | your choice of colour |
| Options: | cover available with or without perforation in the bottom |



Cover for asparagus crate

| | |
|-----------------------------|-------------------------------|
| Item no.: | DB-3403 |
| External dimensions: | 430 x 350 x 25 mm (L x W x H) |
| Unit weight: | 230 g |
| Material: | PP |



Lily crate

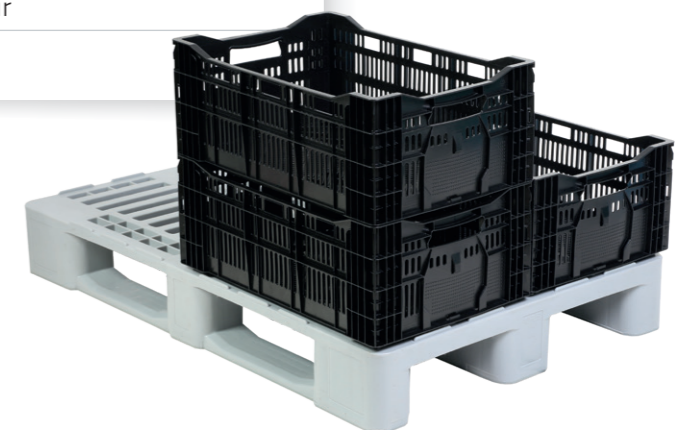
| | |
|-----------------------------|--------------------------------|
| Item no.: | LK-4622-10-R |
| External dimensions: | 600 x 400 x 240 mm (L x W x H) |
| Internal dimensions: | 566 x 367 x 224 mm (L x W x H) |
| Version: | perforated bottom and sides |
| Unit weight: | 1,650 g |
| Volume: | 46 liter |
| Material: | HD-PE regranulate |
| Colour: | your choice of colour |

reinforced handles



Big Box fruits and vegetables

| | |
|-----------------------------|---|
| External dimensions: | 1,200 x 1,000 x 760 mm (L x W x H) |
| Internal dimensions: | 1,120 x 920 x 600 mm (L x W x H) |
| Version: | perforated bottom and sides closed bottom and perforated sides |
| Unit weight: | 37.0 kg with 3 runners, 33.0 kg with 4 feet |
| Volume: | 610 liter |
| Underframe: | 3 runners or 4 feet |
| Material: | HD-PE |
| Colour: | your choice of colour |
| Options: | cover available |





COLLAPSIBLE CONTAINER SERIES GREEN-LINE

The collapsible containers in the Green-Line series were specially developed for the requirements of fresh food logistics. The empty containers are collapsible, and the volume can be reduced of 87 %. This means that the Green-Line series save a lot of space and costs during the transport as well as in storage.

The perforated surfaces are particularly smooth, without sharp edges. This ensures that fruits and vegetables are not damaged during transportation.



Collapsible container series Green-Line – Your benefits

- In-Mould-Label (IML) for high-quality, permanent labeling
- Optimal perforations for ventilation of fruits & vegetables
- Space-saving thanks to a volume reduction of 87 % (collapsed height 30 mm)
- Especially smooth surfaces to protect the goods
- Integrated label holders on both short sides
- With grooves to fix straps
- Integrated hooks for attaching cling films



Collapsible container Green-Line GL6413 Optimum

| | |
|-----------------------------|--------------------------------|
| Item no.: | GL-6413 |
| External dimensions: | 600 x 400 x 126 mm (L x W x H) |
| Internal dimensions: | 570 x 380 x 120 mm (L x W x H) |
| Version: | perforated bottom and sides |
| Unit weight: | 1,385 g |
| Volume: | 26 liter |
| Material: | HD-PE or PP |
| Options: | In-Mould-Label (IML) two sided |



COLLAPSIBLE CONTAINER SERIES GREEN-LINE



87 % volume reducible

Collapsible container Green-Line GL6418 Optimum

| | |
|-----------------------------|--------------------------------|
| Item no.: | GL-6418 |
| External dimensions: | 600 x 400 x 180 mm (L x W x H) |
| Internal dimensions: | 570 x 380 x 170 mm (L x W x H) |
| Version: | perforated bottom and sides |
| Unit weight: | 1,650 g |
| Volume: | 37 liter |
| Material: | HD-PE or PP |
| Options: | In-Mould-Label (IML) two sided |



Collapsible container Green-Line GL6423 Optimum

| | |
|-----------------------------|--------------------------------|
| Item no.: | GL-6423 |
| External dimensions: | 600 x 400 x 225 mm (L x W x H) |
| Internal dimensions: | 570 x 380 x 215 mm (L x W x H) |
| Version: | perforated bottom and sides |
| Unit weight: | 1,900 g |
| Volume: | 47 liter |
| Material: | HD-PE or PP |
| Options: | In-Mould-Label (IML) two sided |





INDUSTRIAL CONTAINER SERIES

Our industrial container series is a 100 % resource-saving product, with 100 % Intech quality. We produce this high-quality Euro standard series for the food and non-food sectors, in a highly flexible range of designs. Different bottom options and open or closed handles allow them to be used in almost any application.

- Storage and transportation containers made of HD-PE or PP plastic (REACH compliant)
- Modular stacking capability
- Extremely stable and durable
- Cover and different versions available



Industrial container 600 x 400 mm ■ Facelift follows

| | |
|-----------------------------|---|
| External dimensions: | 600 x 400 x 170 / 250 / 290 / 330 mm |
| Internal dimensions: | 560 x 360 x 160 / 240 / 280 / 320 mm |
| Version: | open or closed handles closed or perforated bottom |
| Unit weight: | 1,640 / 2,060 / 2,280 / 2,520 g |
| Volume: | 32 / 48 / 56 / 67 liter |
| Material: | HD-PE or PP |
| Colour: | your choice of colour |
| Options: | cover and mounting clip available |



Industrial container 400 x 300 mm ■ Facelift follows

| | |
|-----------------------------|---|
| External dimensions: | 400 x 300 x 130 / 190 / 230 / 270 / 310 mm |
| Internal dimensions: | 365 x 265 x 120 / 180 / 220 / 260 / 300 mm |
| Version: | open or closed handles closed or perforated bottom |
| Unit weight: | 830 / 970 / 1,140 / 1,230 / 1,360 g |
| Volume: | 12 / 17 / 21 / 25 / 29 liter |
| Material: | HD-PE or PP |
| Colour: | your choice of colour |
| Options: | cover and mounting clip available |



We deliver a wide range of equipment for our containers, such as covers, trolleys, glass inserts and compartment inserts, as well as suitable label holders. Our aim is to develop a perfect custom-tailored solution together with our clients.

Compartment inserts

| | |
|-----------------------------|-----------------------------------|
| External dimensions: | 600 x 400 or 400 x 300 mm (L x W) |
| Version: | individual compartment division |
| Material: | PE or PETG |
| Colour: | black or grey |



We customize compartment divisions to individual customer requirements. Choose plastic compartment inserts for efficient, protective, and clean storage, optimal picking processes and secure transport of goods and products. Our partition systems are simple to use, easy to clean, and the ideal addition to your existing warehouse system.

Trolley 600 x 400 mm

| | |
|-----------------------------|-----------------------------|
| Item no.: | RW-46 |
| External dimensions: | 600 x 400 mm (L x W) |
| Version: | closed or perforated bottom |
| Material: | frame made of ABS |
| Colour: | your choice of colour |
| Options: | different wheel variants |



Standard Euro size containers can be moved easily and safely with our practical trolleys, even without using industrial trucks.

Intech trolleys – Your benefits

- With fixed or swivel castors
- Suitable for transporting heavy loads up to 300 kg
- Polypropylene wheels
- Silent rubber wheels
- Closed or perforated frame



RETAIL

FOLDING BOXES

Intech folding boxes are suitable as a transport medium in your logistics process, for in-store presentations, or in classic resale. Our folding boxes are robust and durable, with an appealing design and variety of colours.



77 % volume reducible

Folding box 41 L

| | |
|-----------------------------|--|
| Item no.: | FB-41L |
| External dimensions: | 525 x 355 x 265 mm, folded 60 mm (L x W x H) |
| Internal dimensions: | 495 x 325 x 255 mm (L x W x H) |
| Version: | closed bottom, perforated sides |
| Unit weight: | 1,270 g |
| Load capacity: | 25.0 kg |
| Volume: | 41 liter |
| Material: | PP |
| Colour: | your choice of colour |



80 % volume reducible

Folding box 55 L

| | |
|-----------------------------|--|
| Item no.: | FB-55L |
| External dimensions: | 575 x 380 x 295 mm, folded 60 mm (L x W x H) |
| Internal dimensions: | 545 x 355 x 285 mm (L x W x H) |
| Version: | closed bottom, perforated sides |
| Unit weight: | 1,470 g |
| Load capacity: | 25.0 kg |
| Volume: | 55 liter |
| Material: | PP |
| Colour: | your choice of colour |



RETAIL

STORAGE CONTAINER SERIES STACK & NEST CONTAINER ALLROUNDER

Storage container 600 x 400 mm

■ Facelift follows

| | |
|-----------------------------|---|
| External dimensions: | 600 x 400 x 170 / 250 / 290 / 330 mm |
| Internal dimensions: | 560 x 360 x 160 / 240 / 280 / 320 mm |
| Version: | open or closed handles closed or perforated bottom |
| Unit weight: | 1,640 / 2,060 / 2,280 / 2,520 g |
| Volume: | 32 / 48 / 56 / 67 liter |
| Material: | HD-PE or PP |
| Colour: | your choice of colour |
| Options: | cover and mounting clip available |



Storage container 400 x 300 mm

■ Facelift follows

| | |
|-----------------------------|---|
| External dimensions: | 400 x 300 x 130 / 190 / 230 / 270 / 310 mm |
| Internal dimensions: | 365 x 265 x 120 / 180 / 220 / 260 / 300 mm |
| Version: | open or closed handles closed or perforated bottom |
| Unit weight: | 830 / 970 / 1,140 / 1,230 / 1,360 g |
| Volume: | 12 / 17 / 21 / 25 / 29 liter |
| Material: | HD-PE or PP |
| Colour: | your choice of colour |
| Options: | cover and mounting clip available |



Stack & nest container Allrounder

| | |
|-----------------------------|---|
| Item no.: | DB-3423 |
| External dimensions: | 430 x 350 x 230 mm (L x W x H) |
| Internal dimensions: | top: 355 x 315 x 225 mm (L x W x H) bottom: 325 x 280 mm (conical) (L x W x H) |
| Version: | bottom and sides closed |
| Unit weight: | 600 g |
| Volume: | 20 liter |
| Material: | PP |
| Colour: | your choice of colour |
| Options: | cover available |

85 % volume reducible



Cover for stack & nest container Allrounder

| | |
|-----------------------------|-------------------------------|
| Item no.: | DB-3403 |
| External dimensions: | 430 x 350 x 25 mm (L x W x H) |
| Unit weight: | 230 g |
| Material: | PP |





SHOPPING BASKETS

Intech shopping baskets are extremely lightweight with a weight of just 620 grams but can handle a heavy load capacity thanks to their innovative design and high-quality materials. They can safely transport up to 30 kg. Perfectly suited for retail applications, from grocery stores to construction markets, discounters, or supermarkets. Intech shopping baskets can easily be stacked one inside the other (nestable) to reduce their volume by up to 87%.

The ergonomic handle folds down and guarantees comfortable shopping over a long period of time, without pressure points or aching hands.

Our shopping baskets are very easy to use, with an attractive design that is resistant to breakage. Furthermore, they are washable and 100% recyclable.

Intech baskets can be printed on all four sides with customer logos and advertisements.

Customized shopping baskets in an appealing colour with store branding improves the customer shopping experience, adding a high-quality touch to any store.



SHOPPING BASKETS

Intech shopping baskets – **Your benefits**

- 100% recyclable
- Food-safe and washable
- Volume reduction of 87% when nested
- High quality and attractive design
- Extremely lightweight, yet stable and resistant to breakage
- Ergonomic and foldable bow handle
- Comfortable to carry, even for a long period of time
- Advertisements and logos can be added to all four sides – perfect advertising space



Shopping basket single handle



| | |
|--------------------------------|---|
| Item no.: | EK-4330-EG |
| External dimensions: | top: 430 x 300 x 225 mm bottom: 330 x 205 mm (conical) (L x W x H) |
| Internal dimensions: | top: 410 x 275 x 220 mm (L x W x H) |
| Version: | single handle |
| Unit weight: | 620 g |
| Load capacity: | 30.0 kg |
| Volume: | 22 liter |
| Material: | PP |
| Colour basket / handle: | your choice of colour |

Shopping basket double handle



| | |
|--------------------------------|---|
| Item no.: | EK-4330-DG |
| External dimensions: | top: 430 x 300 x 225 mm bottom: 330 x 205 mm (conical) (L x W x H) |
| Internal dimensions: | top: 410 x 275 x 220 mm (L x W x H) |
| Version: | double handle |
| Unit weight: | 650 g |
| Load capacity: | 30.0 kg |
| Volume: | 22 liter |
| Material: | PP |
| Colour basket / handle: | your choice of colour |



BEVERAGES



BOTTLE CRATES

Bottle crates from Intech are a safe transportation and efficient storage option for beverage products.

Our standardized crates are available with customized compartments, depending on bottle content and pack size. They are stable, high-quality, 100% compatible with all market requirements and therefore ideal for use as reusable deposit crates.

Intech bottle crates have an appealing design and can be printed on all four sides with customer logos and advertisements.

A custom bottle crate, finished in an appealing colour and with custom branding, is the perfect way to present your brand.



BEVERAGES



BOTTLE CRATES

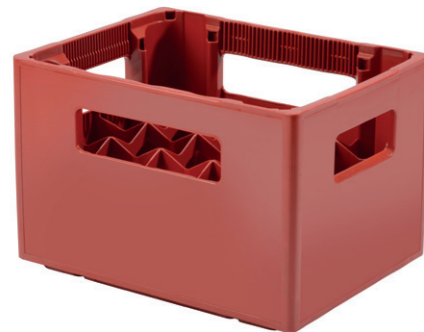
Intech bottle crates – **Your benefits**

- High quality and attractive design
- Suitable as reusable deposit crate
- Advertisements and logos can be added to all four sides – perfect advertising space
- Stable and durable
- Manufactured from high-quality HD-PE
- 100% recyclable
- Suitable for manual handling and automated conveyor systems
- Ergonomic handles



Bottle crate IT20 S

| | |
|-----------------------------|--|
| Item no.: | GK-34265-PE |
| External dimensions: | 400 x 300 x 265 mm (L x W x H) |
| Internal dimensions: | 375 x 285 x 240 mm (L x W x H) |
| Version: | 20 compartments x 0.5 liter wide of compartments 72 mm lamellar handles four-sided |
| Unit weight: | 1,830 g |
| Material: | HD-PE |
| Colour: | your choice of colour |



Bottle crate IT20 L

| | |
|-----------------------------|--|
| Item no.: | GK-3429-PE |
| External dimensions: | 400 x 300 x 290 mm (L x W x H) |
| Internal dimensions: | 370 x 280 x 270 mm (L x W x H) |
| Version: | 20 compartments x 0.5 liter wide of compartments 72 mm lamellar handles four-sided |
| Unit weight: | 1,930 g |
| Material: | HD-PE |
| Colour: | your choice of colour |

Bottle crate type 1a / 1b*

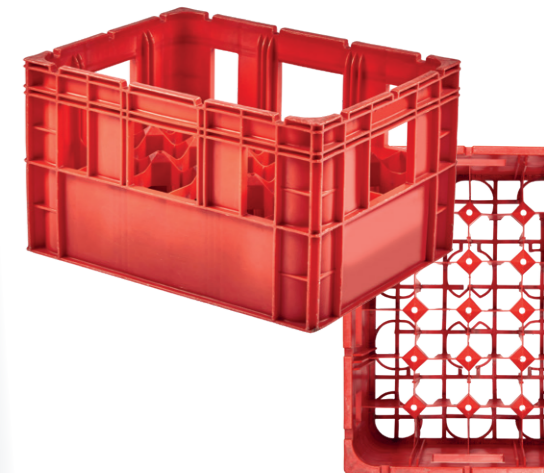
| | |
|-----------------------------|---|
| Item no.: | GK-2333 |
| External dimensions: | top: 356 x 275 x 347 mm (L x W x H) bottom: 354 x 273 x 347 mm (L x W x H) |
| Internal dimensions: | 327 x 246 x 335 mm (L x W x H) |
| Version: | 12 compartments x 0.75 liter wide of compartments 83 mm |
| Unit weight: | 1,400 g |
| Material: | HD-PE |
| Colour: | brown, light green |

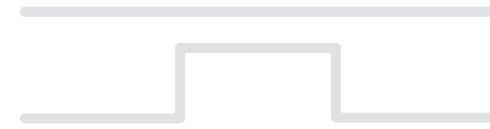
*orders via GDB eG, Bonn



Bottle crate IT24

| | |
|-----------------------------|---|
| Item no.: | GK-24-PE |
| External dimensions: | 400 x 300 x 230 mm (L x W x H) |
| Internal dimensions: | 371 x 271 x 218 mm (L x W x H) |
| Version: | 24 compartments x 0.33 liter wide of compartments 65 mm 15 pin-partitions |
| Unit weight: | 1,360 g |
| Material: | HD-PE |
| Colour: | your choice of colour |





THERMOFORMING YOUR PACKAGING IN PERFECT FORM

Our thermoforming department turns your requirements into the perfect form.

Overview of our services:

- We process ABS, PS, PP, PE, PET, PC, ASA or PMMA sheet materials
- Post-processing with roller presses and CNC milling machines
- Laser engraving available
- We only work with machines from GEIS and ILLIG



The wide range of material types ensures we can offer an extensive range of products:

- High-quality optical components - transparent casings, skylights, lamps, advertising covers
- Claddings for vehicle and machine construction
- Transport trays - for careful and economical transport of your workpieces
- Technical parts - complete housings, thermoboxes, etc.
- Protective covers for machines and devices
- Technical moulded parts according to your requirements

We would be happy to develop a custom solution together with you!








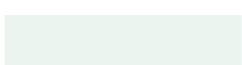



COLOURS

INTECH STANDARD COLOURS

Our containers and pallets are available in many different standard colours. Upon request, we are happy to fulfill your custom colour preference.



-  RAL 3020 traffic red
-  RAL 1023 traffic yellow
-  RAL 6005 moss green
-  RAL 5007 brilliant blue
-  RAL 7042 traffic grey
-  RAL 9011 graphite black
-  RAL 8014 sepia brown
-  RAL 9003 signal white
-  RAL 7031 blue grey (Bakery baskets)



DEVELOPMENT AND TOOL MAKING

Project solutions and custom designs

Intech's areas of expertise include developing and designing custom-tailored project solutions and custom designs, created by our development department, and implemented alongside our tool making.

We offer a comprehensive range of reusable transport packaging for many different applications. However, some customers have highly specialized transportation and storage needs – this is where our development and tool making experts come into play.

As an experienced producer of reusable transportation packaging, we are very familiar with the different industries and applications, and we know what is most important in developing and designing containers and pallets. All custom products and project solutions are created in our in-house development department. This helps to keep the communication channels short, ensuring project work is always efficient and goal oriented.

The first step

We work with our customers to outline their precise profile of requirements for the transportation packaging in a personal meeting. All product requirements are listed in a technical specification.

Development and construction

Based on the technical specification, our product designers create the first construction drawings. Detailed 3D representations provide the customer with an exact impression of the product throughout every step of development for their transportation packaging.

From model to tool

Intech prototyping is able to rapidly produce a first 3D printed sample. In this process, a plastic model is created layer by layer, which the customer can approve.

For the serial production in the injection moulding process a new mould getting built, based on the technical drawings, and optimised using mould flow analysis.

Quality test and delivery

After the first serial production, the new transport packaging undergoes precise quality tests in the laboratory at TÜV Hanover. After it has passed all tests and been approved by the customer, the new transport packaging will be delivered.

Our aim is to develop a perfect custom-tailored solution together with our clients.

Yours, the Intech-Team

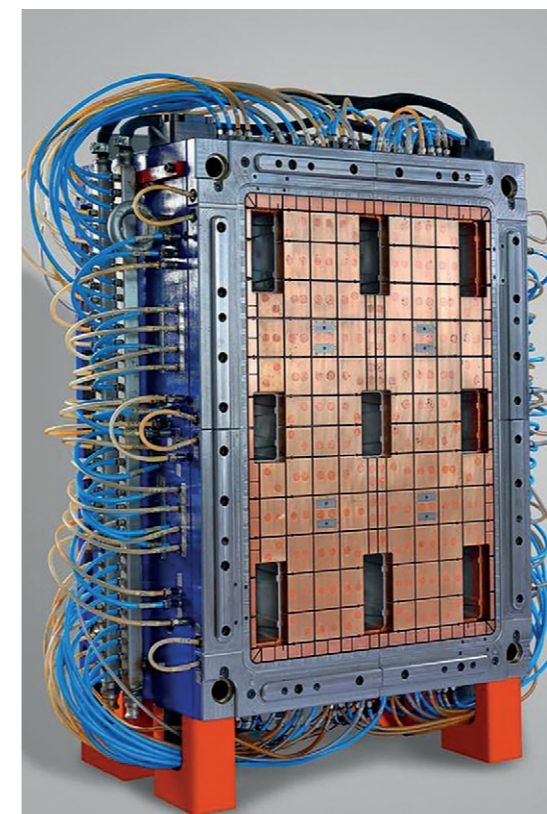
5-axis gantry milling machine from Trimill with unique closed crossbar design for manufacturing of precision parts

- Tilting-rotary table with torque motors and clamping area diameter of 1,200 mm
- Workpiece weight up to 2,500 kg



3-axis gantry milling machine from Trimill for tool and mould manufacturing

- Clamping area 2,000 mm x 1,370 mm
- Workpiece weight up to 10,000 kg





SERVICE FINISHING AND IDENTIFICATION

FURTHER PROCESSING

Your products are adapted and finished in our modern processing centre, through a flexible, customer-directed process.

Directly after injection moulding or thermoforming, the products go through the following finishing steps as needed:

- Laser processing
- Milling
- Printing & engraving
- Bonding
- Coding
- Drilling
- Sawing
- Punching
- Grinding
- Cutting & welding

LABELING AND PRINTING

We offer a variety of options for custom printing of your containers and pallets:

- Screen printing
- Pad printing
- Laser printing
- Hot stamping with typesetting or motif
- Engraving
- Decorative printing

IN-MOULD-LABEL AND CODING

Already during the production process containers and pallets can be equipped with durable In-Mould-Labels (IML) for clear identification.

Upon request, we are happy to develop custom adhesive labels and apply them directly after production.

The following coding types are available:

- QR code
- RFID
- Barcode
- Colour code

BIOPLASTICS

Bioplastics are plastic materials produced from renewable biomass sources. Such products reduce the use of fossil resources and lower CO₂ emissions.

At Intech, we are aware of our ecological responsibilities, and we offer our customers a variety of sustainable bioplastic solutions.

Cellulose



Wood fibres



RECYCLING

Benefit from our recycling service!

At the end of their service life, we take back containers and pallets, recycle their materials and produce new transport packaging, such as our light pallets. This is an ecological and profitable option for your company.



One call is all it takes – we'll quickly pick up your defective containers and pallets. For further information, see pages 4 and 5.

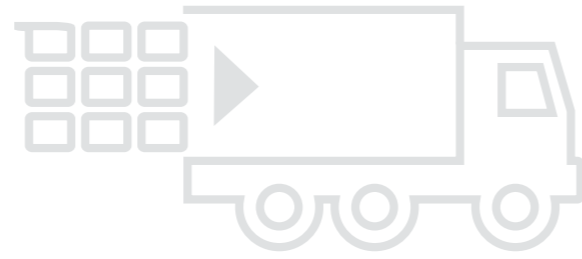


ESD MATERIAL

"Safe from electrostatic charges"

Upon request, we can produce your containers and pallets with ESD additives to prevent static charge.





STORAGE AND SHIPPING

SPECIALIST IN SHIPPING FOOD ITEMS



Hanover headquarters



Availability and quick delivery are important to us!

We have our own truck fleet and large warehouse spaces – this makes us flexible and always able to deliver. With more than 50,000 pallet spaces in our dry storage, we always keep the Intech products available to our customers.

Hanover headquarters



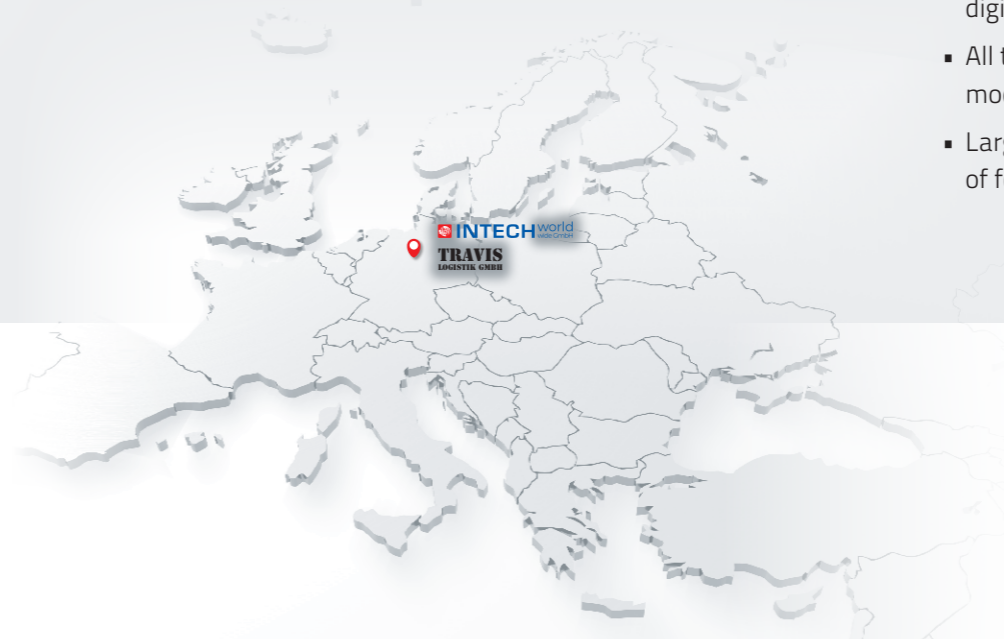
Travis Logistik GmbH specialises in the shipping of food items and is a wholly owned subsidiary of the Intech Group.

Our main focus is on shipping frozen goods and fresh products.

Our modern fleet and specially trained drivers ensure that the cool chain is uninterrupted.

Our performance:

- 30 modern, truck units, primarily box and refrigerated trailers.
- All refrigerated trailers are equipped with digital temperature recorders.
- All trucks are equipped with modern telematics.
- Large warehouse for storing of food and food additives in Hanover.





PREMIUM QUALITY
MADE IN GERMANY



Our company has an excellent solvency.
Learn more:
www.creditreform.de/crefozert

VERSATILE AND DIRECT FROM MANUFACTURER

Intech Worldwide GmbH

Desbrocksheidering 28

30419 Hannover

+49-511-979 1000-0

+49-511-979 1000-40

info@intech-world.com

www.intech-world.com



Download Portfolio



Follow us on LinkedIn